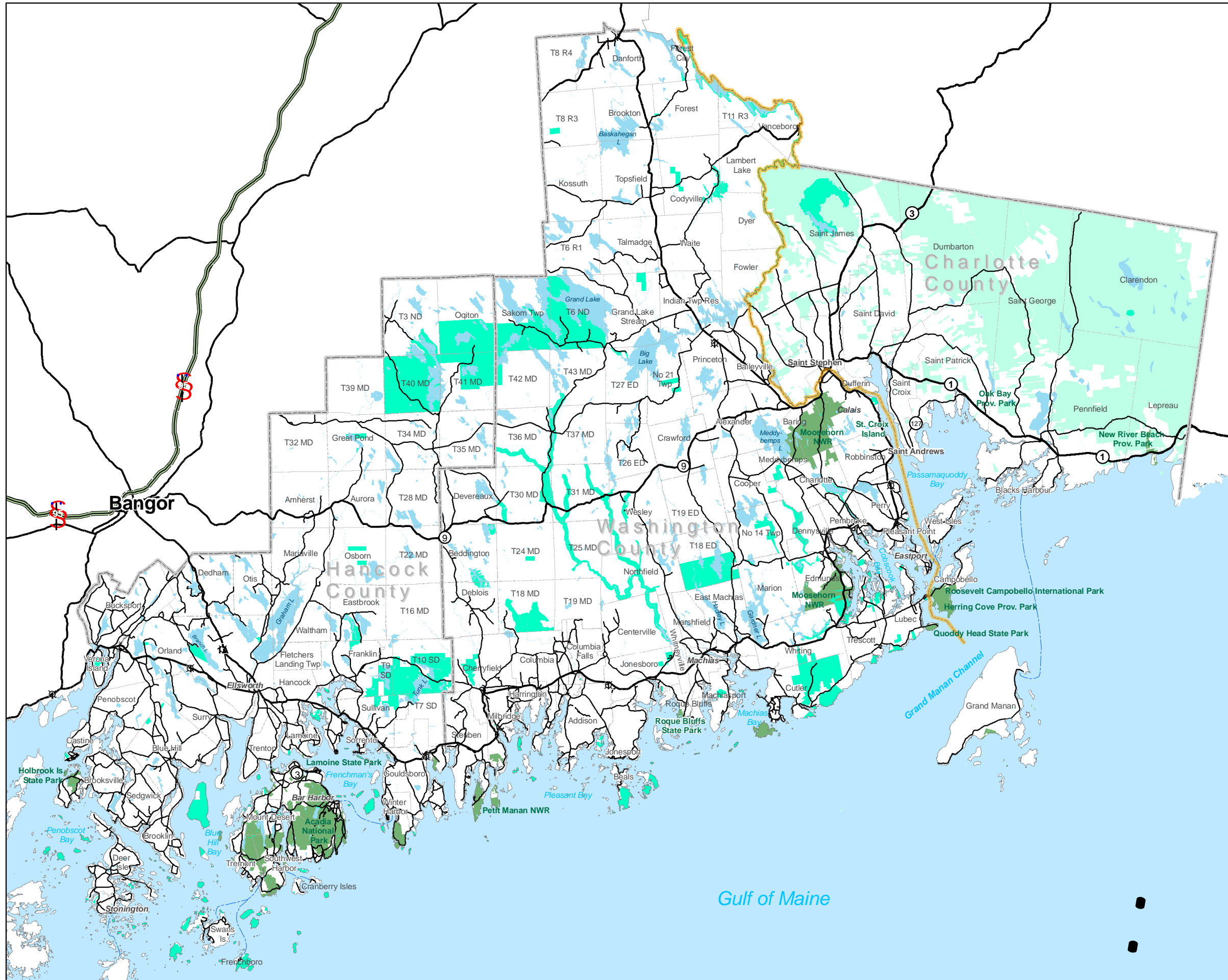


# Resource Guide for Sustainable Tourism: Down East Maine and Southwest New Brunswick

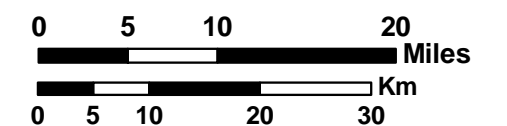


- Interstate Highway
- Primary Roads
- Other Roads
- Ferries (including seasonal)
- International Boundary
- County Boundaries
- Town Boundaries

Federal, State and Provincial Parks  
Also including US National Wildlife Refuges (NWR), which are managed primarily to protect wildlife and wildlife habitat.

Conserved Land  
Public and conserved lands data for the State of Maine comes from the Maine Conserved Lands coverage published by the Office of GIS. The data include land that is held directly by state, federal and local governments as well as land that is owned by land trusts. Land protected by easements are also included. Some parcels remain in private ownership; and do not include provision for public access. Conserved land data for New Brunswick from Service New Brunswick.

Crown Lands  
Crown lands are publicly owned land that fall under either federal or provincial management. Most crown land in New Brunswick is privately managed under rental or lease agreement that do not necessarily make provisions for public access.



Map prepared by Jeremy Gabrielson, WCCOG  
Source: ESRI, ME OGIS, Province of New Brunswick